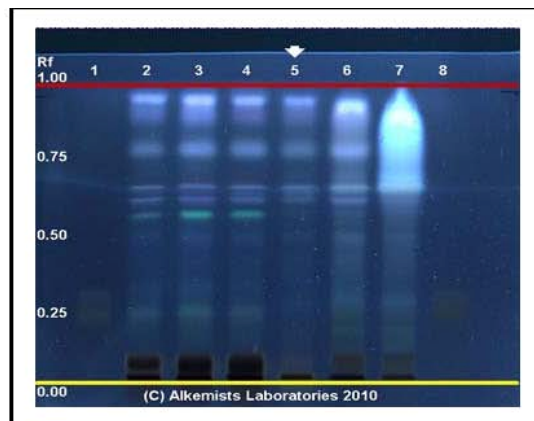
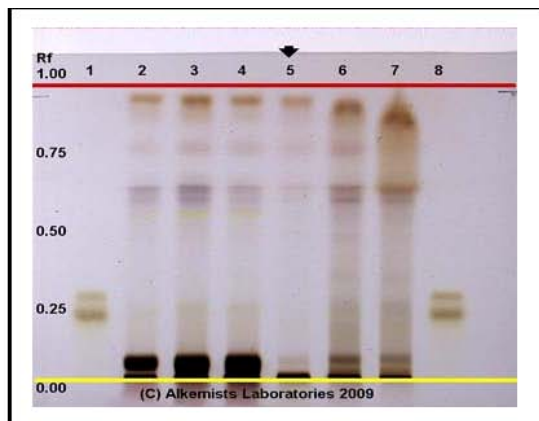


Certificate Issued To:
Marlia Business, S.A.
De la Torre Capital Plaza
Panama



Work performed at:
Alkemists Laboratories
 1260 Logan Ave B2
 Costa Mesa, CA 92626
 714-754-HERB (4372)
 714-668-9972 (FAX)
 E-mail: info@alkemist.com
 Web Site: www.alkemist.com

Certificate of Analysis: "Pure Acai Berry" (#2)
High Performance Thin-Layer Chromatography with Photo-Documentation 1 2



Company Name:	Marlia Business, S.A.
Title:	"Pure Acai Berry"
Plant Part:	fruit
Sample Received:	5/27/2010
Sample Description:	90 capsules in a labeled box
Form of Botanical:	powdered extract
Appearance:	capsules (berry)
Source/Location:	na/na
Lot #:	(#2) → Lane 5(3µl)
Sample #:	AAV14710INCU
Latin Name:	Euterpe oleracea
Reference Sample #:	Lanes 2(2µl), 3(4µl) (AKP10609ERF1) Aristotelia chilensis (fruit); Lane 6(3µl) (AAV07509MRH) Euterpe oleracea (fruit); Lane 7(3µl) (AAV33808ACAI) Euterpe oleracea (fruit) authenticated by macroscopic, microscopic &/or TLC studies according to the reference source cited below, held at Alkemists Pharmaceuticals, Costa Mesa, CA.
Analyst:	B. Fine & SS Sudberg 13595
Sample Prep:	0.3 g + 3 ml CH ₃ OH sonicate/heat @ 50° C ~ 1/2 hr.
Stationary Phase:	Silica gel 60, F ₂₅₄ , 10x 10 cm HPTLC plates
Mobile Phase:	acetone: toluene: HCOOH [5/4/1]
Detection:	(1) 10% Methanolic H ₂ SO ₄ → 115° C 15 min → visible light (2) 10% Methanolic H ₂ SO ₄ → 115° C 15 min → UV 365 nm
Reference Std:	Lanes 1(2µl) and 8(2µl) Ascorbic acid (111020-255, Chromadex) ~0.1% in CH ₃ OH
Reference Source:	Method Developed by Alkemists Pharmaceuticals SOP-700-0001-R3

Comments & Conclusions: Yellow line = sample origin @ 10mm, red line = solvent front @ 70mm. Lane 5 is the test sample "Pure Acai Berry" (#2). Lanes 2, 3, 6, 7 are the authenticated reference samples used for comparison. **This test sample, "Pure Acai Berry" (#2), is consistent with the chromatographic profile of the reference samples of Euterpe oleracea used above. This test sample, "Pure Acai Berry" (#2) is characteristic of an extract derived from Euterpe oleracea fruit.**

Dr. Sidney Sudberg
 X(L)AV 411(MR)R

Digitally signed by Sidney Sudberg
 DN: c=US, o=Alkemists Pharmaceuticals, ou=Pharmaceuticals, location=Costa Mesa, CA, email=sidney@alkemist.com, cn=Sidney Sudberg
 Date: 2010.06.14 12:41:52 -07'00'

Examined, Reviewed & Authorized by: Sidney Sudberg, Director, Alkemists Labs

Report Date: 6/2/2010

Note: Any unidentified lanes in the above chromatograms are confidential and may represent internal studies or other test samples not related to #2. **This report applies to the sample investigated and is not necessarily indicative of the quality or condition of apparently identical or similar products. This report is for the exclusive use of the party who requested the report and not for public dissemination or use by third parties, including for promotional purposes, without the prior written permission of Alkemists Pharmaceuticals, Inc. This report provides technical results for a specific sample and the report shall not be altered, modified, supplemented or abstracted in any manner. Any violation of these conditions renders the report and its results void. © 2010 Alkemists Pharmaceuticals, Inc. All Rights Reserved**